



Three Pad High Current SMD Inductors ~SEP1005ME SERIES

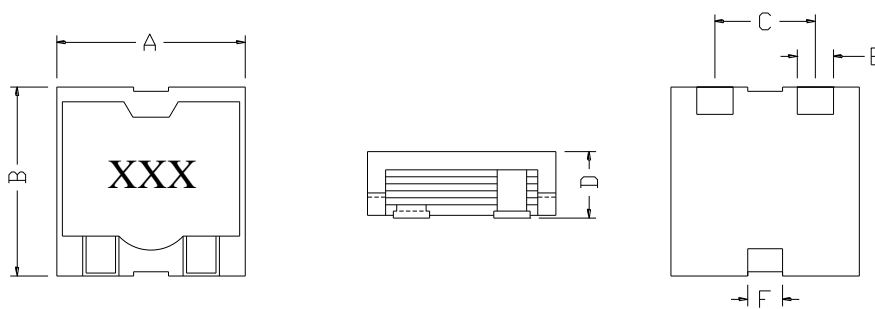


PART NUMBERING SYSTEM

SEP	1005ME	—	1R0M	—	LF
TYPE	DIMENSIONS		INDUCTANCE		LEAD FREE

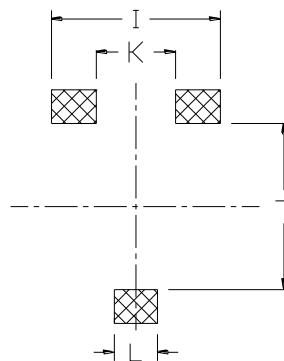
SHAPES AND DIMENSIONS :

UNIT : mm



A=10.6 Max. B=10.6 Max. C=5.5 D=5.5 Max. E=2.5 F=1.5

RECOMMENDED PATTERNS



I = 8.20 J = 5.80 K = 5.7 L = 2.4

UNIT : mm



E-mail : info@coilmaster.com.tw

3F No.211, Huan Bei Rd. Chung Li District , Taoyuan City, Taiwan

Tel : +886-3-422-8279

Fax : +886-3-452-5688

Coilmaster Electronics Co., Ltd.

Web Site : www.coilmaster.com.tw

Three Pad High Current SMD Inductors ~SEP1005ME SERIES



ELECTRICAL CHARACTERISTICS :

PART NUMBER	INDUCTANCE (μ H)	Isat (A) (Max.)	Irms (A) (Max.)	DCR (m Ω) (Typ.)	DCR (m Ω) (Max.)
SEP1005ME-R80M-LF	0.80 \pm 20%	25.6	16.3	4.30	5.00
SEP1005ME-1R0M-LF	1.0 \pm 20%	17.5	16.3	4.30	5.00
SEP1005ME-1R2M-LF	1.2 \pm 20%	21.3	15.0	5.90	7.00
SEP1005ME-1R3M-LF	1.3 \pm 20%	17.2	16.3	4.30	5.00
SEP1005ME-1R5M-LF	1.5 \pm 20%	14.5	15.0	4.30	5.00
SEP1005ME-1R8M-LF	1.8 \pm 20%	14.3	15.0	5.90	7.00
SEP1005ME-2R0M-LF	2.0 \pm 20%	16.2	11.5	8.30	10.0
SEP1005ME-2R2M-LF	2.2 \pm 20%	10.0	16.3	4.30	5.00
SEP1005ME-2R5M-LF	2.5 \pm 20%	12.1	12.0	6.40	8.50
SEP1005ME-3R2M-LF	3.2 \pm 20%	8.5	15.0	5.90	7.00
SEP1005ME-4R0M-LF	4.0 \pm 20%	8.8	11.5	8.30	10.0
SEP1005ME-4R3M-LF	4.3 \pm 20%	7.0	12.0	6.40	8.50
SEP1005ME-5R7M-LF	5.7 \pm 20%	6.0	11.5	8.30	10.0

* Test frequency AT 100KHz

* Operating temperature range : -45 $^{\circ}$ C to + 125 $^{\circ}$ C. Electrical specifications at 25 $^{\circ}$ C

* Isat: DC current at which the inductance drops 30% from its value without current.

* Irms: Average current for a 40 $^{\circ}$ C rise above 25 $^{\circ}$ C ambient.

* Electrical specifications at 25 $^{\circ}$ C.

* Low DC resistance, current handle > 25.6 Amps

* Third mounting pad for greater adhesion on board

* High current, low loss of iron powder core.

* Low profile for machine placement.

* Minimize electromagnetic interference.

* Suppress common mode noise.

* Prevent EMI effect via precise impedance